

## Start up HITRAP CS.

For proper work of the HITRAP CS the following computers have to be switched on:

**appc188** (CS Core PC, location Ex.2.012);

**appc187** (CS Hardware PC, location Ex.2.013);

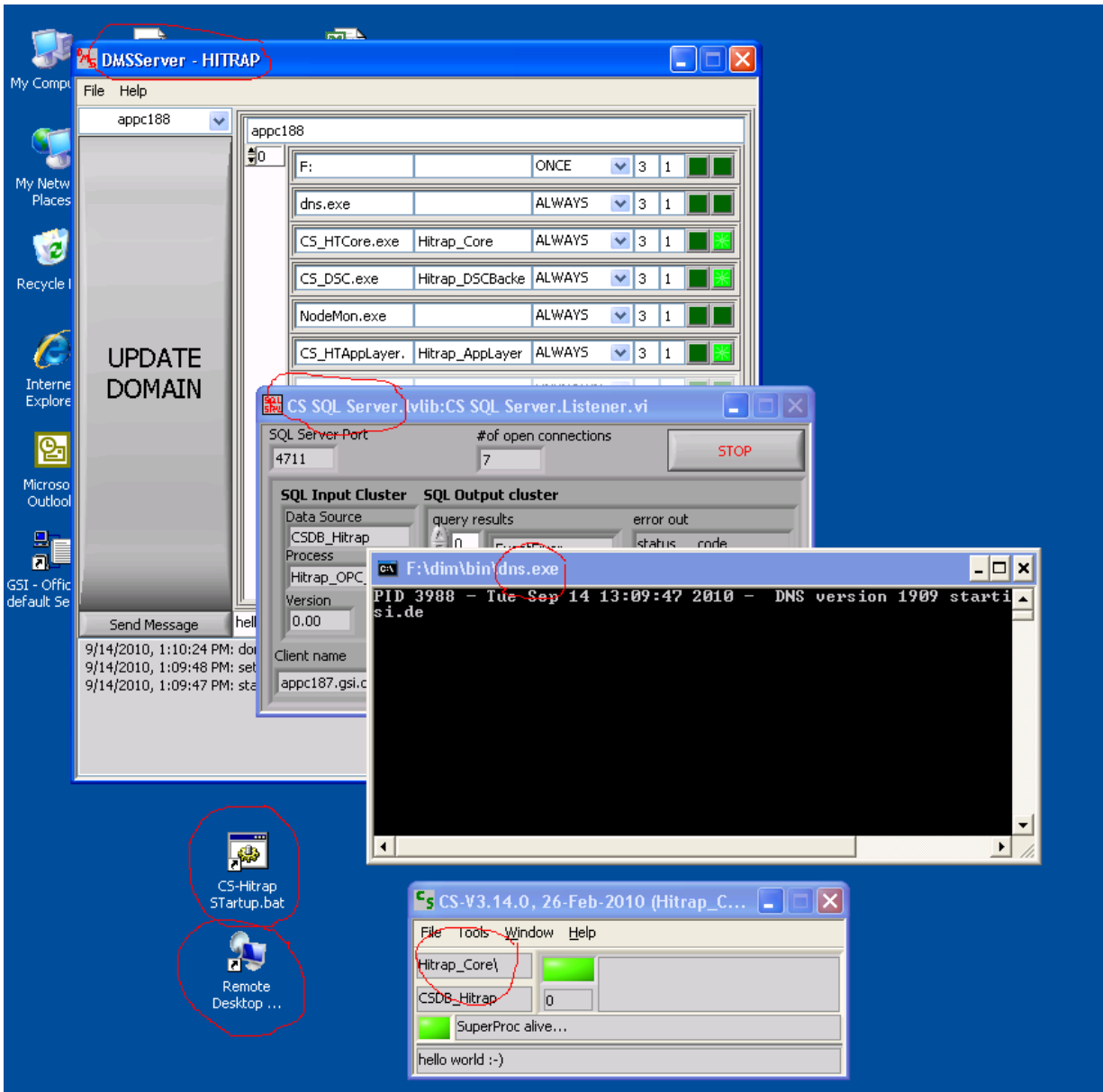
**appc191** (CS GUI PC, location Ex.2.012);

**appc181** (CS Trap PC, location- the high voltage cage in the tunnel).

**appc143**(HV Switch PC, location Ex.2.012).

In order to start up the CS one has to do the next steps:

1. Run the file CS-Hitrap SStartup.bat from Desktops of all the PCs. In its turn this file will run automatically the DNS, the SQL and the DMS Servers on the Core PC (appc188) and the DMSClients on every PCs.
2. Press the Update Domain button in the DMSServer on the Core PC. This operation will start all CSs on every PC.
3. Look at the DMSViewer on the GUI PC (appc191). All fields on the right side have to be green.



Node	CPU	Mem	OS
appc174	-1	-1	NOLINK
appc163	-1	-1	NOLINK
appc191	1	200900	WIN32
appc181	4	149728	WIN32
appc187	0	286204	WIN32
appc188	4	300836	WIN32

CSSystem	Version	Node	Age
Hitrap_Developer2	NOLINK	appc174	-1:59:59
Hitrap_Developer1	NOLINK	appc163	-1:59:59
Hitrap_GUI	CS-V3.14.1, 07-May-2010	appc191	0:1:20
Hitrap_HVSwitches	CS-V3.14.1, 07-May-2010	appc181	0:24:0
Hitrap_OPC_DIM_Gd	CS-V3.14.0, 26-Feb-2010	appc187	0:14:20
Hitrap_Ion_Source	CS-V3.12.3, 08-Aug-2008	appc187	0:15:50
Hitrap_Core	CS-V3.14.0, 26-Feb-2010	appc188	0:24:0
Hitrap_DSCBackend	CS-V3.14.0, 26-Feb-2010	appc188	0:23:50
Hitrap_AppLayer	CS-V3.14.0, 26-Feb-2010	appc188	0:23:50

hello world :-)      Show CS Systems

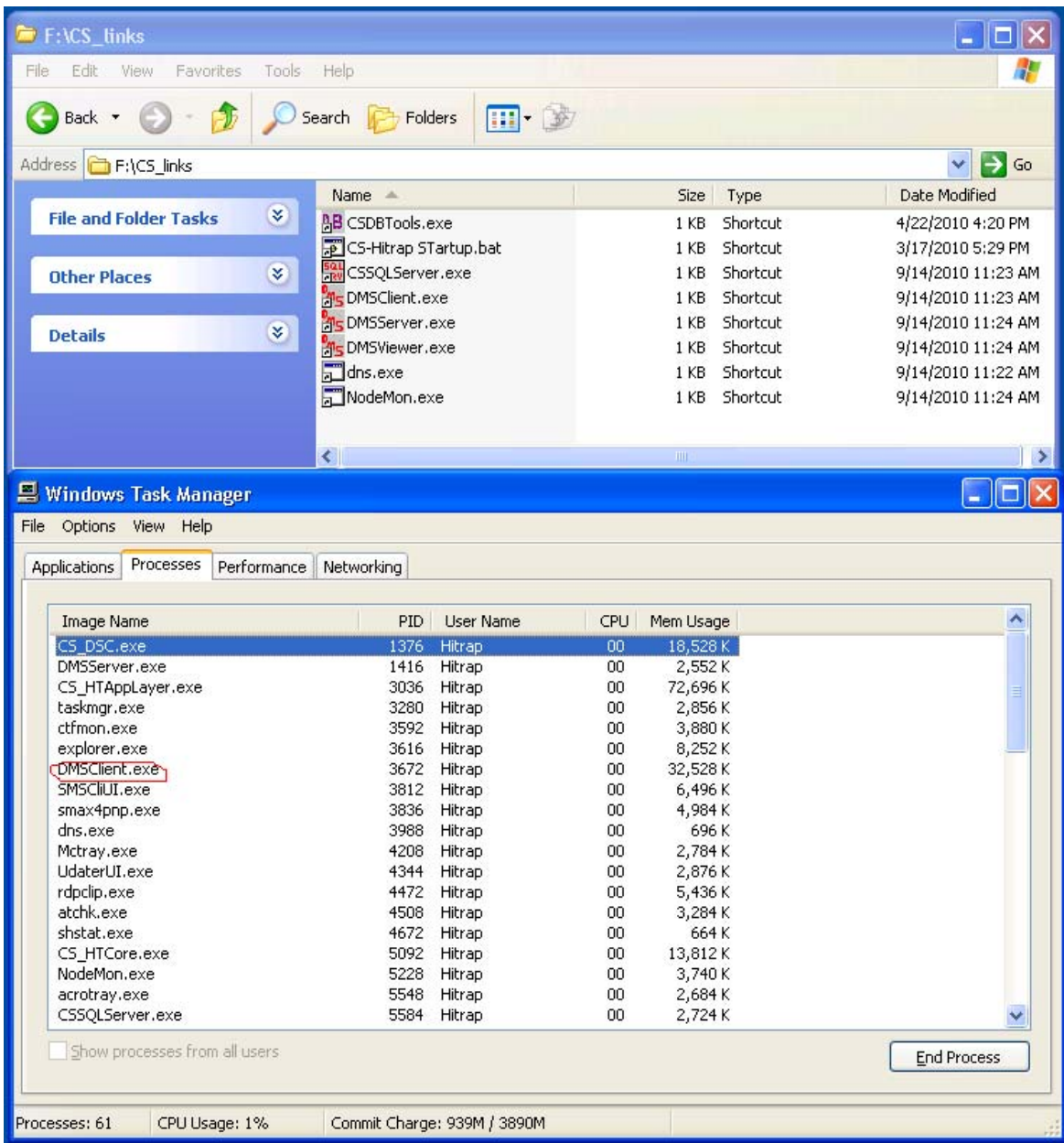
## Troubleshooting.

If some lines in the DMSViewer are not green then there are problems on the corresponding PCs. In this case connect to a *problem PC* (use Remote Connection) under logon “hitrap” and shut down the *CS window which has red light* (press File-> Shutdown). The closed CS will restart automatically, if not then press Update Domain button in the DMSServer on the PC appc188.

If it didn't help try to:

1. Log off from a problem PC.
2. Restart the problem PC.
3. Update domain on the PC appc188.

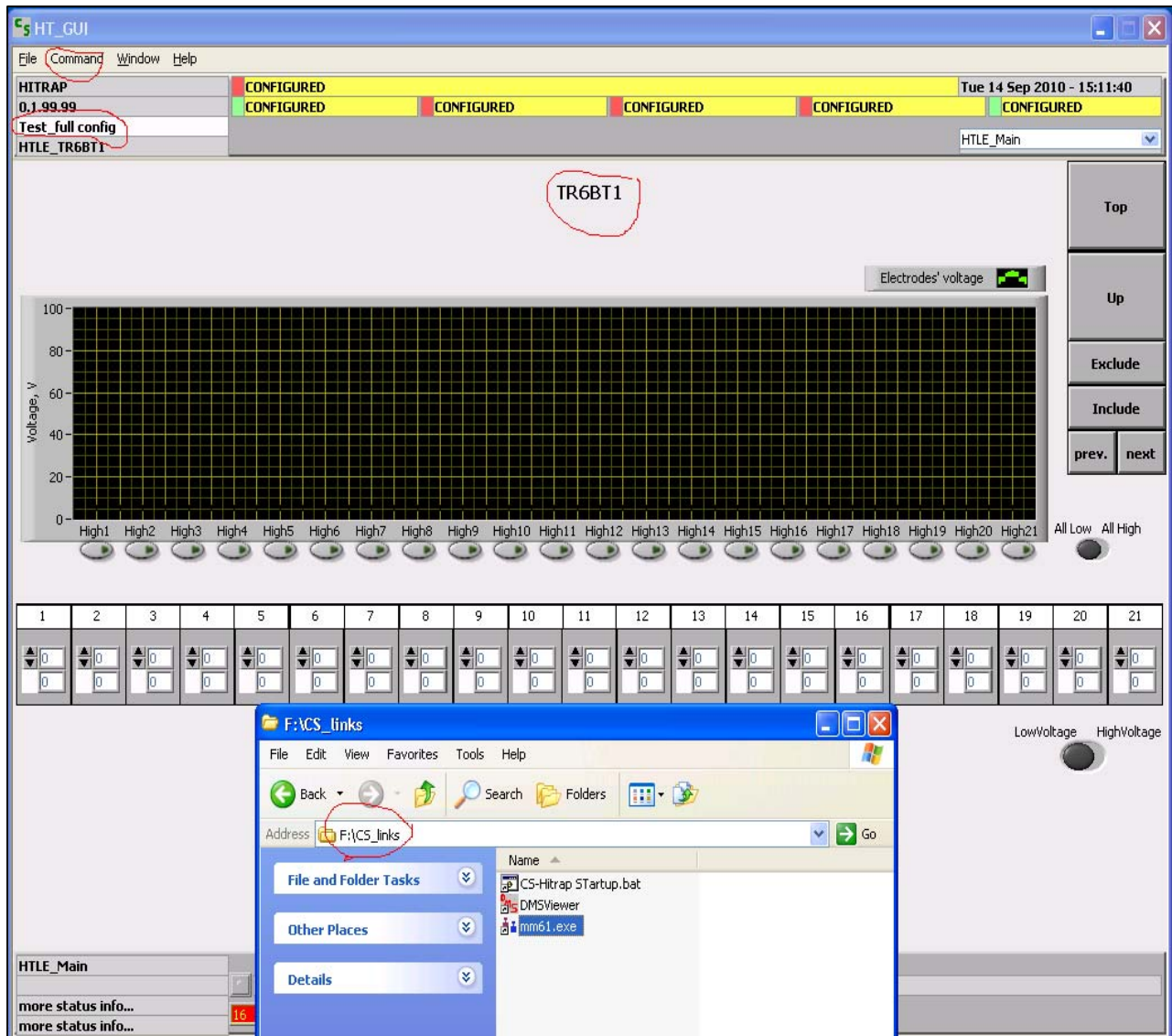
One can use Task Manager on every computer to see active programs or to close CSs windows if the shutdown buttons are unavailable. On every PC in the folder “User Data:\CS\_links” one can find useful links if it will be necessary to run some programs.



## Work on the GUI PC (appc191).

To configure the HITRAP hardware one has to:

1. Type the name of a desirable configuration file instead of N\A in the HT\_GUI (for example Test\_full config).
2. Press Command>>Configure, then press Command>>Prepare for operations.
3. Click on the desirable part of the line (for example a part for the cooler trap TR6BT1).
4. Work with hardware (for example, configure the voltage on the trap electrodes and run the program mm61.exe for a timing sequence).



Configuration files can be created on the Core PC using User GOG for every part of the line you interested in. Saved files are located on the Core PC in *F:\HitrapControlSystem\Hitrap\_ApplicationLayer\settings*.

If you accidentally closed the window of GUI and want to get it back then shut down the Hitrap\_GUI CS (on the appc191). The CS will be restarted with the GUI automatically.